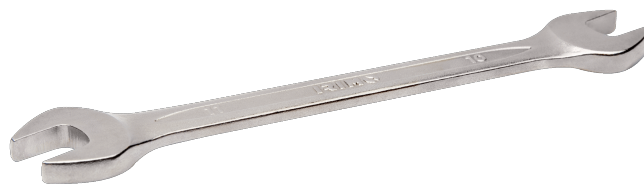


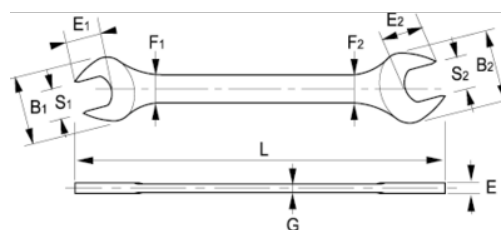


**10-0405-1/10-3032-1**  
**Llaves fijas de dos bocas**



**DETALLES DEL PRODUCTO**

- Llave fija de dos bocas en dimensiones métricas.
- Acabado: cromado mate.
- Material: aleación de acero de alto rendimiento.
- Dureza: 42-50 HRC.
- Normas: ISO 10102.
- -1 blíster.



## ATRIBUTOS DE PRODUCTO

Producto		<b>L</b>	<b>B1xB2</b>	<b>F1xF2</b>	<b>E1xE2</b>	<b>E</b>	<b>G</b>	
<b>10-0405-1</b>	4x5 mm	105 mm	13x15 mm	6.5x7.5 mm	7.2x7 mm	3.2 mm	2.5 mm	15 g
<b>10-0607-1</b>	6x7 mm	122 mm	17.4x19.4 mm	7.5x8.5 mm	8.1x9 mm	4.1 mm	2.8 mm	21 g
<b>10-0809-1</b>	8x9 mm	137 mm	20.4x22.4 mm	8.5x9.5 mm	10.5x11.2 mm	4.6 mm	3.3 mm	30 g
<b>10-1011-1</b>	10x11 mm	151.4 mm	24.2x27.2 mm	10.5x11.5 mm	11.6x13.3 mm	5.4 mm	3.8 mm	46 g
<b>10-1013-1</b>	10x13 mm	151.4 mm	24.2x37.2 mm	10.5x11.5 mm	11.6x13.3 mm	5.4 mm	3.8 mm	46 g
<b>10-1213-1</b>	12x13 mm	166.5 mm	29.4x31.4 mm	12.5x13.5 mm	13.6x15.3 mm	6.1 mm	4 mm	66 g
<b>10-1415-1</b>	14x15 mm	182 mm	32.4x35.4 mm	13.5x14.5 mm	16x17.5 mm	6.5 mm	4.4 mm	95 g
<b>10-1617-1</b>	16x17 mm	196.5 mm	36.4x38.4 mm	15.5x16.5 mm	18.5x19.6 mm	6.9 mm	4.8 mm	124 g
<b>10-1719-1</b>	17x19 mm	221 mm	40.4x42.4 mm	16.5x18.5 mm	20.8x22.4 mm	7,4 mm	5.1 mm	160 g
<b>10-1819-1</b>	18x19 mm	211.9 mm	40.4x42.4 mm	16.5x18.5 mm	20.8x21.2 mm	7.4 mm	5.1 mm	157 g
<b>10-2022-1</b>	20x22 mm	226.9 mm	43.4x47.4 mm	18.5x19.5 mm	23.3x24.5 mm	8.6 mm	5.6 mm	188 g
<b>10-2123-1</b>	21x23 mm	241.9 mm	46.4x50.4 mm	18.5x20.5 mm	23.6x26 mm	9.2 mm	5.8 mm	211 g
<b>10-2224-1</b>	22x24 mm	241.9 mm	46.4x50.4 mm	18.5x20.5 mm	23.6x26 mm	9.2 mm	5.8 mm	208 g
<b>10-2426-1</b>	24x26 mm	261.9 mm	50.4x54.4 mm	21.5x23.5 mm	27.9x29.8 mm	10 mm	6.2 mm	293 g
<b>10-2427-1</b>	27x24 mm	261.9 mm	50.4x54.4 mm	21.5x23.5 mm	27.9x29.8 mm	10 mm	6.2 mm	284 g
<b>10-2528-1</b>	25x28 mm	281.9 mm	54.4x59.4 mm	23.5x24.5 mm	28.6x30.7 mm	10.6 mm	6.6 mm	366 g
<b>10-2729-1</b>	27x29 mm	282.4 mm	54.6x59.6 mm	23.5x24.5 mm	28.6x30.7 mm	10.6 mm	6.6 mm	362 g
<b>10-3032-1</b>	30x32 mm	302.9 mm	61.4x68.4 mm	24.5x26.5 mm	33.4x35.5 mm	11 mm	7 mm	481 g